

INTELLIGENT | PROFESSIONELL | SOLIDE



Reliable solutions custom-made - Butzbach HANGAR DOORS

BUTZBACH
DOORS+FAÇADES

The operative processes in an aircraft hangar demand a high level of organization, efficiency and reliability. These requirements have to be fulfilled by the hangar door to the same extent. Butzbach hangar doors have been developed precisely to meet these high expectations.

intelligent best working conditions due to the light transmitting infill made of thermally insulated, low-weight fibreglass

professional individual project support from the first sketch to the acceptance and during the entire door life span

solid the lightweight, corrosion-free design and a multitude of innovative technologies are warrants for the reliable function and permanent operational availability



With the experience of more that 800 projects in over 30 years Butzbach hangar doors are enhanced and optimized for each new project. Here are some examples for the many sophisticated technical solutions which help to assure an efficient and trouble-free hangar operation:



Smooth passage

Due to heavy-duty, heatable steel tracks with minimal clearance



Compensation of roof lowering

Reliable operation even under varying load of the main steel or wood structure, e.g. due to snow



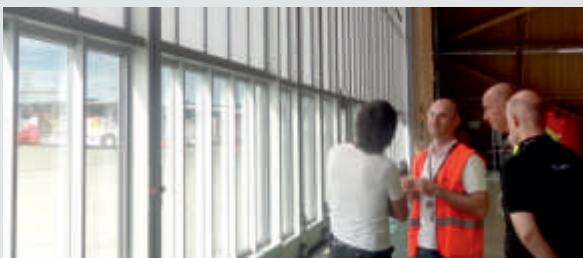
Fibreglass – light and lightitude

Light transmission up to 78%, superior thermal insulation, very low dead weight, free of radar reflection, 100% UV absorption, bright and cast-shadow-free interiors



Operational at any moment

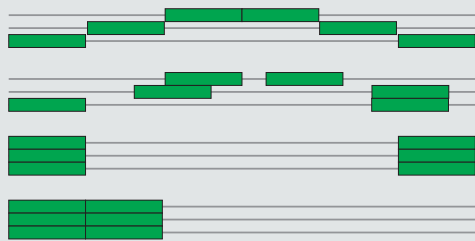
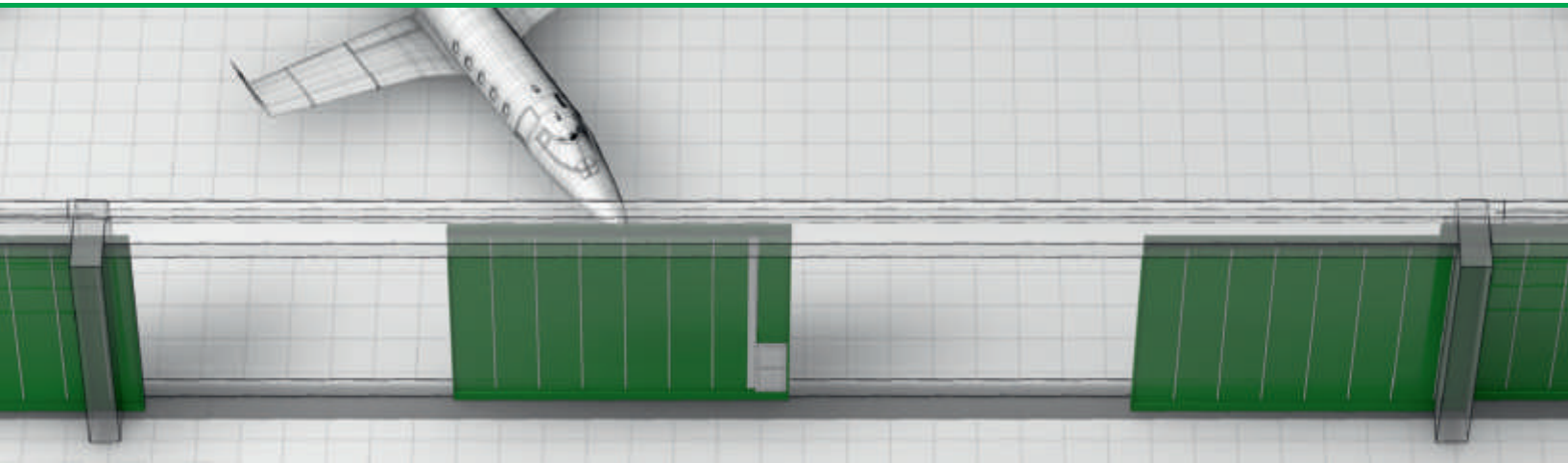
Easy operation by hand or with a tractor in case of power failure or other urgency



Support in each step

As an integrated corporation you receive from us consultation, design, construction support, manufacturing, installation, start of operation, service and maintenance from a single source. Our Butzbach employees assume responsibility in each phase of your project. And they do this with pleasure and motivation

Sliding door with independent leaves



- Individual movement of the door leaves
- For dimensions until beyond 400m wide and 30m high
- Manual or electric operation

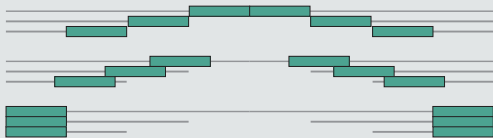
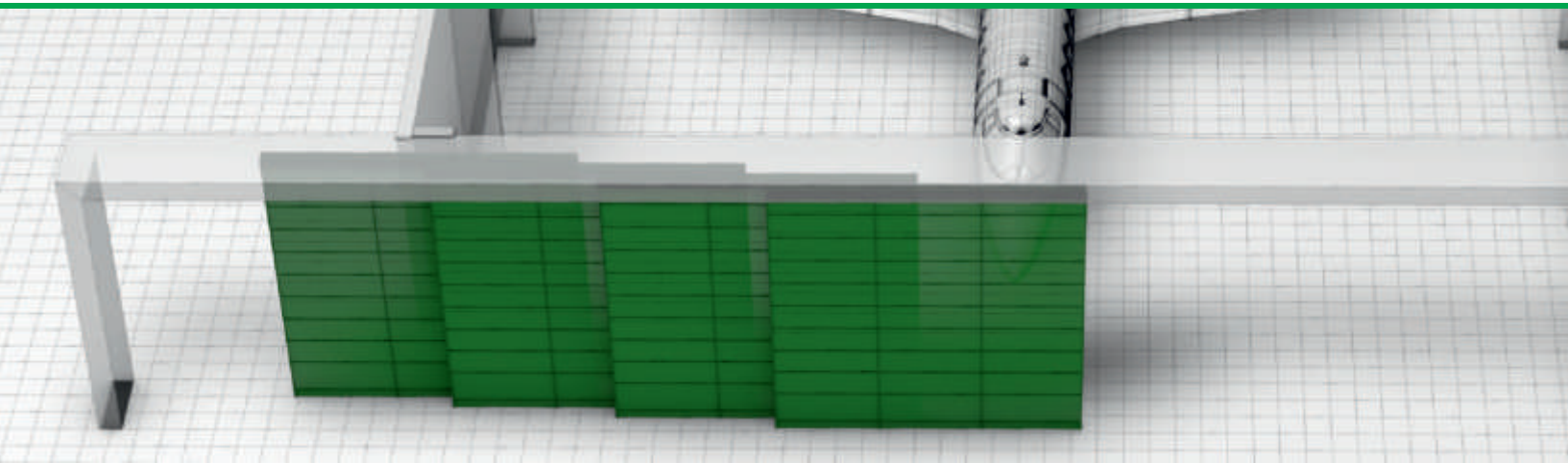
Individual access to the hangar at any moment

The Butzbach sliding door with freely moveable door leaves allows each individual door panel to be shifted easily. This ensures the highest flexibility in application, e.g. if a hangar is used for several aircraft.

When the door leaves are parked besides the building, the entire width of the hangar is accessible. For superior requirements in protection the door can be upgraded in burglar resistance class 3.



Telescopic sliding door



- Swift opening of the entire door
- Internal coupling of the door leaves
- Simultaneous opening on the push of a button

Simplified operation

In the Butzbach telescopic door the several door leaves are interconnected and open at the same time at the push of a single button. This system increases the ease of operation and accomplishes a fast access to the hangar.

When the door leaves are parked besides the building, the entire width of the hangar is accessible.



Round-the corner door

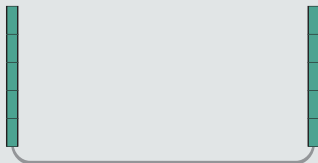


- Door leaves guided along the lateral hangar walls
- Parking of the door leaves inside or outside the building
- Ideal in case of limited available space or circular hangars

The hangar door with parking zone along the hangar wall



In the Butzbach round-the-corner door each panel is guided along the lateral wall at the inside or at the outside of the hangar. This is ideal if there is limited available space, for special hangar designs or if several hangars are side by side. Once open, the entire width of the hangar is accessible.



Additional equipment



Each hangar door is an individual solution. You can equip your hangar with exactly the features you need for an effective operation. Here you can find a range of additional equipment. For requirements which go beyond these, our experienced specialists can develop a bespoke solution. Within our more than 800 realised hangar door projects we have already accomplished many special wishes.

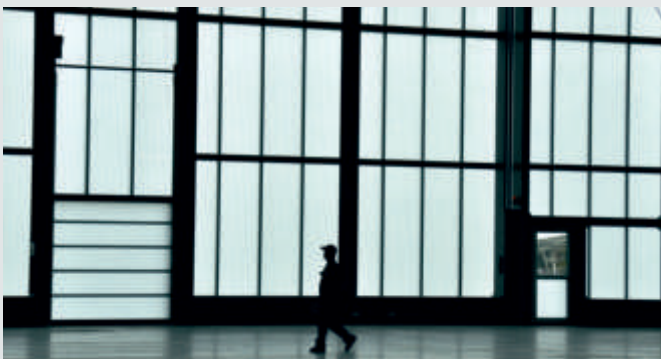
Tail door

The installation of tail doors in your building leads to lower necessary heights of the main bottom rolling door and as a consequence to a reduction in cost.



Fuselage door adaptation

Special adaptations for the enveloping of an aircraft fuselage enable a tight and sealed closure of the hangar door even if the aircraft is too long for the hangar. This is also possible as a posterior adaptation of an existing door, e.g. in case of a utilisation of an existing hangar for a bigger aircraft type.



Integrated staff doors or vehicle doors

Door follows function: You can integrate smaller doors for vehicles directly into the main hangar door. Small pass doors are perfect for the personal traffic. The solid door features an extremely low, barrier-free threshold. The hangar door can remain closed in this cases.



Our product range



Fibreglass façades VARIOPLANplus

- State-of-the-art material composition: thermally broken aluminium frame with fibreglass infill
- Superior light transmittance, extremely low weight, excellent thermal insulation and an outstanding life span
- Unique in application, physical performances and optical appearance



Stacking doors SPACELITE

- Superior, glare-free light conditions in the building due to light transmitting fibreglass
- Compact dimensions due to the space-saving stacking technology
- High life span together with reliable operation due to low-wear technology and materials

Sectional doors SECTIOLITE

- Individual components and optional features such as a high opening speed
- Superior working conditions inside the building due to the light transmitting fibreglass panels
- Robust and durable technology for an extended life time and economic and reliable operation



High-speed doors NOVOSPRINT

- Exemplary safety and speed: Side-opening with up to 5 m/s
- Individual adaptation and equipment for each application
- superior efficiency due to its economic and reliable function